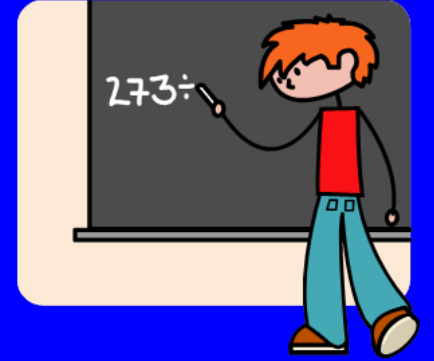




# WELCOME TO YEAR 6



Class teachers:

Mr East - Chestnut

Mrs Mephram - Holly

Miss Lohendran - Pine

Teaching assistants:

Mrs Seagroatt

Mrs Gilbert

Miss Willis

Mrs Sammut



# Homework



	Task 1	Task 2
Maths	<b>Hand out:</b> Monday Not to be handed in.	<b>Hand out:</b> Monday <b>Due in:</b> Thursday
	<b>Response:</b> Adult to sign in diary to confirm completion.	<b>Response:</b> Complete task in homework book and hand in.
English	<b>Hand out:</b> Thursday Not to be handed in	<b>Hand out:</b> Thursday <b>Due in:</b> Monday
	<b>Response:</b> Adult to sign in diary to confirm completion.	<b>Response:</b> Complete task in homework book and hand in.
Topic	Given out half termly. Due date given with project.	



# Reading record and homework diary expectations

Homework	
Monday:	
Tuesday:	
Wednesday:	
Thursday:	
Friday:	
	Signature: .....

Please help us by checking and signing the homework diary at least once a week. Class teachers or teaching assistants will check and sign the diaries on Friday each week.

We expect pupils to draw our attention to any messages written in the diary and to remember simple verbal messages.

# How you can help with homework?

**Making sure homework is done on time and handed in.**

**For both Maths and English homework task 1 does not require submission, so please sign their homework diary.**

**Encouraging the children to do their very best.**

**Encouraging them to become more independent as the prospect of high school approaches.**

**Encourage them to read a varied range of texts for pleasure and please share the enjoyment with them. This will be encouraged through reading reward system.**

**In their homework diaries, the children have helpful questions you might want to use to ask them about their reading.**


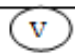


## Our Marking Code

You may see some of these symbols in your child's books and on homework.

This code is displayed in the classroom and also in their Maths and English books so children should know what each symbol means.

Please ask them if you are unsure.

✓	I like this
✓ ✓	I really like this
	<i>Re. the learning objective</i>
a	learning objective achieved
p.a.	learning objective partly achieved
n.a.	learning objective not achieved
p	punctuation missing / check punctuation
sp 	check spelling
t	check that you have written in the correct tense
o	missing words
_____?	does not make sense (underline the words that do not make sense and then record a ?)
Highlighted in yellow	Improve / correct
/	new line needed
//	begin a new paragraph
w.w.c.t. Blue pen	worked with the class teacher NB Teachers marking is all in blue pen
w.w.t.a. Red pen	worked with a teaching assistant NB TA marking is in red pen -Supported writing -V if you have given verbal feedback -I if after you help the child they work independently. -Write a 'remember to' comment.
I	Independent work
	verbal feedback given
'S'	marked by a supply teacher NB Supply teachers mark in BLACK PEN only
TIM	Target Implemented and Met
	NB Children respond to teacher's marking in green
	All work should be neatly presented in Nelson handwriting style.



SATS - w/b 14th May 2018



WE  
HOPE!

# How we prepare....

We will do 'Practice SATs' and SAT type questions once a term.

There will be a meeting before the SATs to deal with specific queries.

Writing and Science is teacher assessed.

We will prepare them as we usually do. If there is any new information, we will let you know.

Continue with the support you're providing them - more will be explained later.

# Groups in Y6

Pupils are grouped for Maths and English lessons.

We have 3 sets in year 6 for Maths. Two are parallel sets and one is more able.

We decide which group will suit a child best using a range of information including test scores, learning styles and confidence.

We review the groups regularly and will sometimes move pupils if it would benefit them. We will inform you if these changes occur.

Please remember all the groups aim to ensure all pupils reach their full potential.

Children are taught reading and writing in their class.

# Transfer to High School

You should have received a Transfer to High School purple leaflet which contains dates for all applications, Open Evenings and entrance tests. All applications are now to be completed online.

If you have any queries we will try our best to help but please be aware that we cannot recommend any high school.

We are aware of the Open Evening schedule and will allow a little extra time for homework to be completed.

# Rewards

Children are rewarded in a number of ways:

Raffle tickets

Golden Book

Golden Time/Whole Class Rewards

Reading rewards

Phone calls home.



# Sanctions

Loss of Golden Time.

Kept in during break / lunch to complete work.

Time Out (for a minimum of 10 minutes).

Lunchtime Detention (20 minutes: a letter will be sent home to inform you of your child receiving this sanction).

Loss of Prefect duties.

Excluded from school trips to Hayling Island / Bough Beach.

## Social Media/Mobile phone usage in and out of school.

Contacting staff members.

Monitoring usage.

Whats App.

Cyber bullying.

Mobile phones are ONLY to be brought into school if your child walks with an adult and they should only be using their phones to contact you

Age limit!



without

And there are lots of FUN things too...





Evacuation Day

WW2 VE day street party

General Knowledge Quiz

Bough Beech

River Wandle visit

Hayling Island

Cycling Proficiency

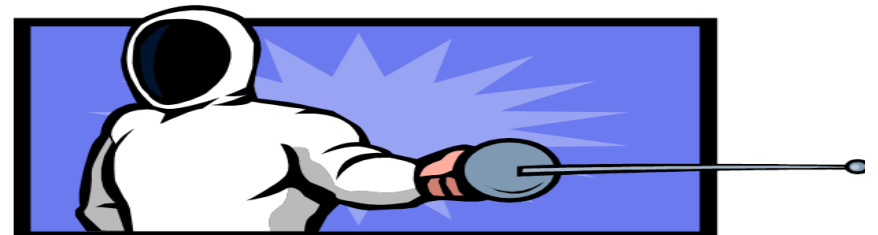
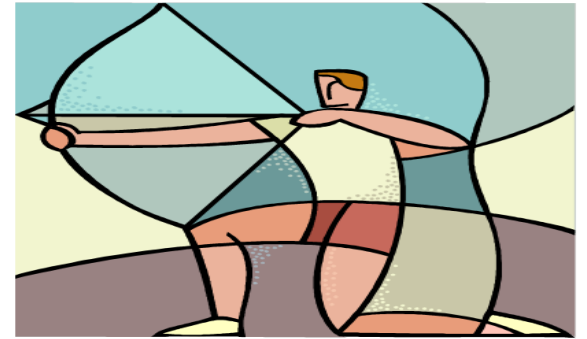
The all-singing, all dancing Year 6 Production!

The Leavers Disco!



It's not too late to book a place. Come and see us if you want to discuss anything.

# Mill Rythe



**Monday 4th June - Friday 8th June**  
**MILL RYTHE CHILDREN'S VILLAGE**

**There will be a meeting for  
parents at the beginning of  
the Summer Term.**

**Medical and contact forms will  
be sent out in due course.  
Please return promptly.**

If there is anything you are not sure about,

**P**LEASE

**C**ome and talk to us about it! We are usually in the playground after school or make an appointment through the office.



